

BAŞAKŞEHİR AVRASYA - 2+1 APARTMENT / RESIDENCE Istanbul / Başakşehir

ةقش - عيبلل 8,320,000 TL | 117 m2 Istanbul / Başakşehir



فرعلا ددع : 2
نولاصللا ددع : 1
تاماملال ددع : 1
لكيهللا عون : ةقش
ةديجة ةراجة ةمالع : ةلودلا لكيه
مادختساللا عوضو : غراف
دوقوللا عون : يعيبط زاغ
لكيهللا بناوچ : برغ
لامش
بونج
قرشلها
تيللاوتلا ددع :
كنبللا تركللسانم : معن
ةضياقم : ال
لقن : ال



İsmail Can

Phone +90 542-811 80 80

Mobile Phone +90 542-811
80 80



REALTY GALAXY

Phone +90 542-811 80 80

Mobile Phone +90 533-382
39 79

Fax +90 212-855 74 75

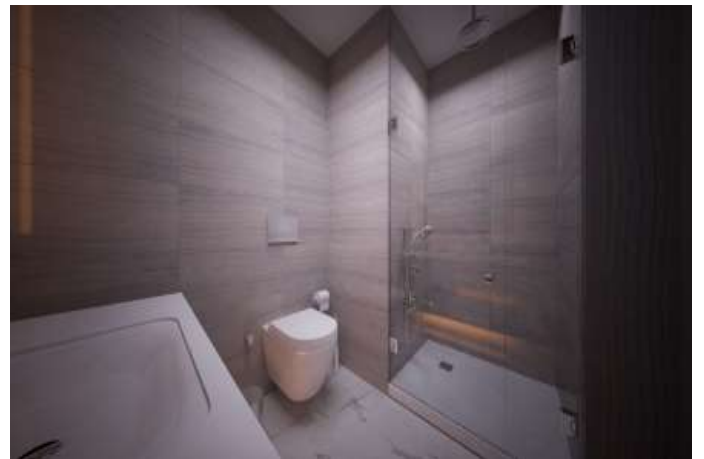
Yavuz Sultan Selim Bulvarı

Büyükkçekmece /

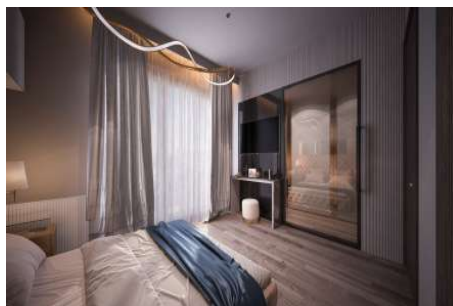
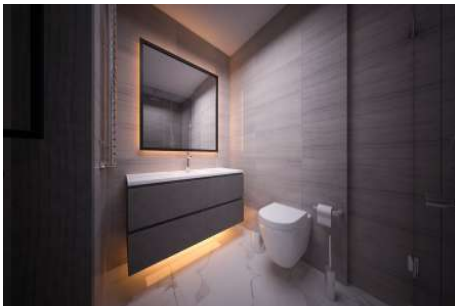
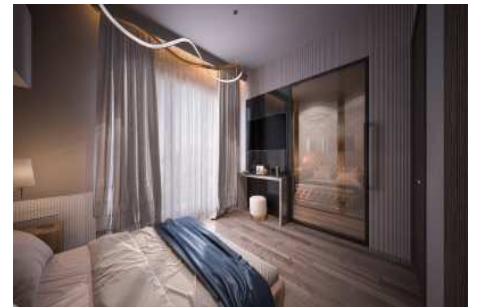
Büyükkçekmece

34528 , Istanbul

Advert No:f-494589-901



Advert No:f-494589-901

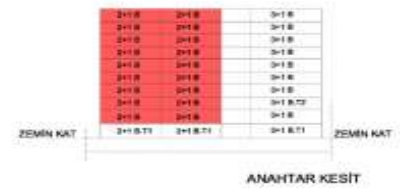


Advert No:f-494589-901

2+1 B

GİRİŞ HOLLÜ	7.47 m ²
SALON	22.60 m ²
MUTFAK	10.64 m ²
YATAK ODASI	9.94 m ²
E.YATAK ODASI	16.77 m ²
E.BANYO	4.32 m ²
BANYO	4.16 m ²
HOL	4.56 m ²
ÇAMAŞIR ODASI	0.88 m ²
BALKON	4.93 m ²

NET ALAN	81.53 m ²
NET ALAN(balkon dahil)	86.46 m ²
BRÜT ALAN	97.00 m ²
SATILABİLİR ALAN	117.91 m ²
DEPO	3.00 m ²



2+1 E.1

SİRE HOLLÜ	6.07 m ²
SALON	22.37 m ²
MUTFAK	10.64 m ²
E.YATAK ODASI	16.77 m ²
E.BANYO	4.32 m ²
BANYO	4.16 m ²
HOL	4.56 m ²
ÇAMAŞIR ODASI	0.88 m ²
BALKON	4.93 m ²

NET ALAN	81.53 m ²
NET ALAN(balkon dahil)	86.46 m ²
BRÜT ALAN	97.00 m ²
SATILABİLİR ALAN	117.91 m ²
DEPO	3.00 m ²



1+1 B.T

SİRE HOLLÜ	6.07 m ²
SALON	15.40 m ²
MUTFAK	4.93 m ²
BANYO	4.16 m ²
HOL	4.56 m ²
ÇAMAŞIR ODASI	0.88 m ²
BALKON	4.93 m ²

NET ALAN	41.00 m ²
NET ALAN(balkon dahil)	45.93 m ²
BRÜT ALAN	52.00 m ²
SATILABİLİR ALAN	67.00 m ²
DEPO	3.00 m ²



2+1 D

SİRE HOLLÜ	6.07 m ²
SALON	15.40 m ²
MUTFAK	4.93 m ²
E.YATAK ODASI	16.77 m ²
E.BANYO	4.32 m ²
BANYO	4.16 m ²
HOL	4.56 m ²
ÇAMAŞIR ODASI	0.88 m ²
BALKON	4.93 m ²

NET ALAN	81.53 m ²
NET ALAN(balkon dahil)	86.46 m ²
BRÜT ALAN	97.00 m ²
SATILABİLİR ALAN	117.91 m ²
DEPO	3.00 m ²



1+1 A

SİRE HOLLÜ	6.07 m ²
SALON	15.40 m ²
MUTFAK	4.93 m ²
BANYO	4.16 m ²
HOL	4.56 m ²
ÇAMAŞIR ODASI	0.88 m ²
BALKON	4.93 m ²

NET ALAN	41.00 m ²
NET ALAN(balkon dahil)	45.93 m ²
BRÜT ALAN	52.00 m ²
SATILABİLİR ALAN	67.00 m ²
DEPO	3.00 m ²



