

## GALATASARAY LEO RESIDENCE - 1+1 APARTMENT / RESİDANCE Istanbul / Şişli

For Sale - Apartment 517,000 \$ | 59 m2 Istanbul / Şişli



# Rooms : 1  
# Saloons : 1  
# Baths : 1  
Type of Property : Apartment Flat  
Property Condition : Brand New  
Usage Status : Empty  
Property Direction : East  
West  
North  
South



İsmail Can

Phone +90 542-811 80 80

Mobile Phone +90 542-811  
80 80



REALTY GALAXY

Phone +90 542-811 80 80

Mobile Phone +90 533-382  
39 79

Fax +90 212-855 74 75

Yavuz Sultan Selim Bulvarı

Büyükkçekmece /

Büyükkçekmece

34528 , Istanbul

Advert No:f-494589-909

---

- \* Internal Properties : Alarm, Balcony, Steel Door, Diaphone with screen, Security System,
- \* Building : Elevator / Lift, With Garden, Earthquake Regulation Proof, Earthquake Resistant, Pressure Tank, Intercom, Internet, Generator-Power Unit, Doorman, Water tank, Fire ladder, Carry Lift/Elevator, Ground Survey, Reinforced Concrete, Parking, Fire Alarm,
- \* Environment : Shopping Center, Kindergarten, ATM, Bank, Municipality, Gas Station, Cafe, Drugstore, Drugstore / Medical, Entertainment Center, Elementary School, Cafeteria, Nursery, Coiffure & Beauty Center, High School, Market, Game Park, Park, Post Office, Restaurant, Health Center, District Bazaar, University, Veterinary, School,
- \* External Properties : Sheathing,
- \* Compound : Fitness Center, Security, Parking - Indoor, Social Facility, Gym, Sauna (General), Security Camera,
- \* Location : Near to Street, Near the Sea, Near to E5 Highway, City View, Close to Subway, Close to Public Transportation, Close to Minibus Route, Close to Marine Transportation, Close to Metrobus Transportation, Close to Eurasia Tunnel, Close to Eurasia Tunnel, Close to City Center,

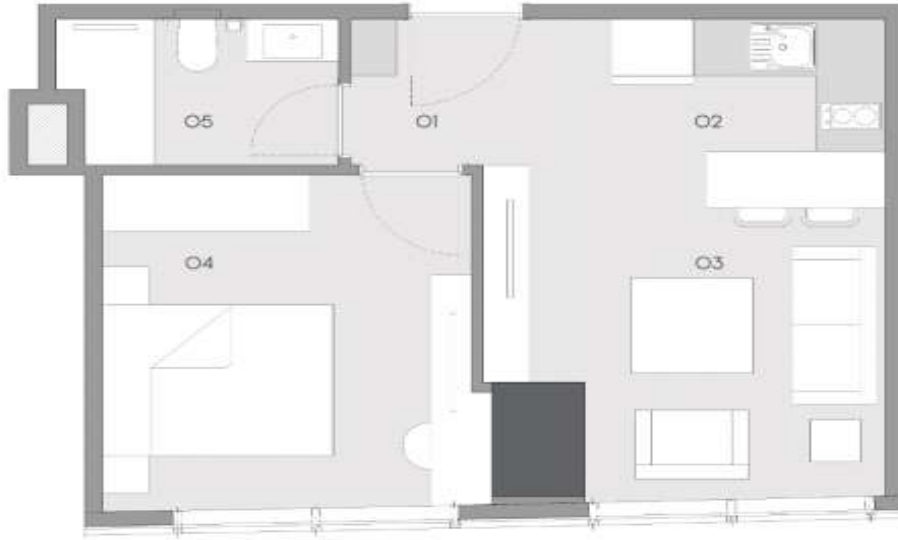
Advert No:f-494589-909



Advert No:f-494589-909



Advert No:f-494589-909



**LEO**  
RESIDENCES

**1+1 C\***

O1 GİRSİS HOLLÜ :	3,48 m <sup>2</sup>
O2 MÜTFAK :	5,97 m <sup>2</sup>
O3 SALON :	11,59 m <sup>2</sup>
O4 YATAK ODASI :	13,57 m <sup>2</sup>
O5 WC :	4,48 m <sup>2</sup>
<b>DAİRE ALANI :</b>	<b>39,12 m<sup>2</sup></b>
<b>SATIŞA ESAS ALAN :</b>	<b>57,36 m<sup>2</sup></b>

Özellikler genel olarak inşaat projeleri ile ilgili değişiklikler yapılabilmektedir. Bu nedenle, satış sözleşmesi imzalandıktan sonra, inşaat süreci boyunca değişiklikler yapılabilmektedir. Bu nedenle, satış sözleşmesi imzalandıktan sonra, inşaat süreci boyunca değişiklikler yapılabilmektedir.



**LEO**  
RESIDENCES

**1+1 B**

O1 GİRSİS HOLLÜ :	3,40 m <sup>2</sup>
O2 MÜTFAK :	4,80 m <sup>2</sup>
O3 SALON :	13,30 m <sup>2</sup>
O4 YATAK ODASI :	4,20 m <sup>2</sup>
O5 WC :	4,20 m <sup>2</sup>
<b>DAİRE ALANI :</b>	<b>30,10 m<sup>2</sup></b>
<b>SATIŞA ESAS ALAN :</b>	<b>38,82 m<sup>2</sup></b>



1B1 KAT



1B2 KAT

**LEO**  
RESIDENCES

**1+1 Dikkatli B**

O1 GİRSİS HOLLÜ :	4,50 m <sup>2</sup>
O2 MÜTFAK :	6,00 m <sup>2</sup>
O3 SALON :	10,00 m <sup>2</sup>
O4 YATAK ODASI :	10,00 m <sup>2</sup>
O5 WC :	10,00 m <sup>2</sup>
<b>DAİRE ALANI :</b>	<b>30,50 m<sup>2</sup></b>
<b>SATIŞA ESAS ALAN :</b>	<b>40,00 m<sup>2</sup></b>



**LEO**  
RESIDENCES

**1+1 D**

O1 GİRSİS HOLLÜ :	3,40 m <sup>2</sup>
O2 MÜTFAK :	6,20 m <sup>2</sup>
O3 SALON :	11,40 m <sup>2</sup>
O4 YATAK ODASI :	4,00 m <sup>2</sup>
O5 WC :	4,00 m <sup>2</sup>
<b>DAİRE ALANI :</b>	<b>29,00 m<sup>2</sup></b>
<b>SATIŞA ESAS ALAN :</b>	<b>37,00 m<sup>2</sup></b>



**LEO**  
RESIDENCES

**1+1 C**

O1 GİRSİS HOLLÜ :	3,40 m <sup>2</sup>
O2 MÜTFAK :	6,00 m <sup>2</sup>
O3 SALON :	11,00 m <sup>2</sup>
O4 YATAK ODASI :	11,00 m <sup>2</sup>
O5 WC :	6,00 m <sup>2</sup>
<b>DAİRE ALANI :</b>	<b>37,40 m<sup>2</sup></b>
<b>SATIŞA ESAS ALAN :</b>	<b>47,00 m<sup>2</sup></b>

