

HEP RESIDENCE KAĞITHANE - 2+1 APARTMENT / RESIDENCE Istanbul / Kağıthane

For Sale - Apartment 272,000 \$ | 87 m2 Istanbul / Kağıthane



Rooms : 2
Saloons : 1
Baths : 1
Type of Property : Apartment Flat
Property Condition : Brand New
Usage Status : Empty
Property Direction : West
North
South
East



İsmail Can

Phone +90 542-811 80 80

Mobile Phone +90 542-811
80 80



REALTY GALAXY

Phone +90 542-811 80 80

Mobile Phone +90 533-382
39 79

Fax +90 212-855 74 75

Yavuz Sultan Selim Bulvarı

Büyükkçekmece /

Büyükkçekmece

34528 , Istanbul

Advert No:f-494589-888

- * Building : Elevator / Lift, Earthquake Regulation Proof, Earthquake Resistant, Generator-Power Unit, Doorman, In Compound, Water tank, Carry Lift/Elevator, Reinforced Concrete, Parking, Fire Alarm,
- * Environment : Shopping Center, Kindergarten, ATM, Bank, Gas Station, Bowling, Cafe, Live Music, Mini Movie Theater, Drugstore, Drugstore / Medical, Entertainment Center, Fair, Elementary School, Firefighting, Cafeteria, Nursery, Coiffure & Beauty Center, High School, Market, Game Park, Park, Post Office, Restaurant, Health Center, District Bazaar, University, Veterinary, School,
- * Location : Near to E5 Highway, City View, Near to Highway, Close to Public Transportation, Close to Eurasia Tunnel, Close to TEM, Close to City Center,

Advert No:f-494589-888



Advert No:f-494589-888





A BLOCK-1A7
FLOOR:2,3,4,5,6,7,8

1+1 APARTMENT
GROSS: 89,3 m²

- ENTRANCE:
4,60 m²

- LIVING ROOM :
19,01 m²

- KITCHEN:
5,20 m²

- M. BEDROOM:
14,40 m²

- BATHROOM:
3,80 m²



B BLOCK - 1B2
FLOOR:1,2,3,4,5,6,7,8

1+1 APARTMENT
GROSS: 90,9 m²

- ENTRANCE:
5,66 m²

- LIVING ROOM + KITCHEN:
24,49 m²

- BEDROOM:
13,50 m²

- BATHROOM:
4,11 m²



A BLOCK - 1A9
FLOOR:1,3,4,5,6,7,8

1+1 APARTMENT
GROSS: 86,17 m²

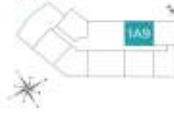
- ENTRANCE:
5,66 m²

- LIVING ROOM:
16,42 m²

- KITCHEN:
5,87 m²

- BATHROOM:
4,11 m²

- M.BEDROOM:
12,24 m²



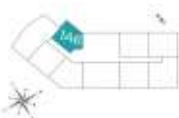
A BLOCK - 1A6
FLOOR:1,3,4,5,6,7,8

1+1 APARTMENT
GROSS: 73,97 m²

- LIVING ROOM + KITCHEN:
19,01 m²

- M. BEDROOM:
11,20 m²

- BATHROOM:
3,60 m²



B BLOCK - 1B4
FLOOR:1,2,3,4,5,6,7,8

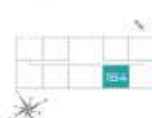
1+1 APARTMENT
GROSS: 90,9 m²

- ENTRANCE:
5,66 m²

- LIVING ROOM + KITCHEN:
24,49 m²

- BEDROOM:
13,50 m²

- BATHROOM:
4,11 m²



Advert No:f-494589-888

B BLOCK - 1B1
FLOOR:12.A.5A.503

1+1 APARTMENT
GROSS: 85,78 m²

ENTRANCE: 5,66 m²
LIVING ROOM + KITCHEN: 22,26 m²
BEDROOM: 12,24 m²
BATHROOM: 4,11 m²

A BLOCK - 1A8
FLOOR:12.A.5A.78

1+1 APARTMENT
GROSS: 90,89 m²

ENTRANCE: 5,30 m²
LIVING ROOM + KITCHEN: 24,30 m²
H BEDROOM: 14,40 m²
BATHROOM: 3,80 m²

A BLOCK - 1A5
FLOOR:1

1+1 APARTMENT
GROSS: 77,54 m²

ENTRANCE: 5,66 m²
LIVING ROOM + KITCHEN: 18,91 m²
BEDROOM: 9,15 m²
BATHROOM: 4,40 m²

B BLOCK - 1B3
FLOOR:12.A.5A.79

1+1 APARTMENT
GROSS: 85,78 m²

ENTRANCE: 5,66 m²
LIVING ROOM + KITCHEN: 22,26 m²
BEDROOM: 12,24 m²
BATHROOM: 4,11 m²

A BLOCK - 1A10
FLOOR:12.A.5A.78

1+1 APARTMENT
GROSS: 91,31 m²

ENTRANCE: 5,66 m²
LIVING ROOM + KITCHEN: 24,49 m²
H BEDROOM: 13,50 m²
BATHROOM: 4,11 m²