

HEP RESIDENCE KAĞITHANE - 2+1 APARTMENT / RESIDENCE İstanbul / Kağıthane

Satılık - Apartman Dairesi 272,000 \$ | 87 m2 İstanbul / Kağıthane



Oda Sayısı : 2
Salon Sayısı : 1
Banyo Sayısı : 1
Yapının Şekli : Apartman Dairesi
Yapının Durumu : Sıfır
Kullanım Durumu : Boş
Yapının Yönü : Batı
Kuzey
Güney
Doğu



İsmail Can

Phone +90 542-811 80 80

Mobile Phone +90 542-811
80 80



REALTY GALAXY

Phone +90 542-811 80 80

Mobile Phone +90 533-382
39 79

Fax +90 212-855 74 75

Yavuz Sultan Selim Bulvarı

Büyükcçekmece /

Büyükcçekmece

34528 , İstanbul

Advert No:f-494589-888

- * Bina : Asansör, Deprem Yönetmelikli, Depreme Dayanikli, Jeneratör, Kapıcı, Site içerisinde, Su deposu, Yük Asansörü, Betonarme Karkas, Otopark, Yangın Alarmı,
- * Çevre Bilgisi : Alışveriş Merkezi, Anaokulu, ATM, Banka, Benzin İstasyonu, Bowling, Cafe, Canlı Müzik, Cep Sineması, Eczane, Eczane & Medikal, Eğlence Merkezi, Fuar, İlköğretim, İtfaiye, Kafeterya, Kreş, Kuaför & Güzellik Merkezi, Lise, Market, Oyun Parkı, Park, Postane, Restorant, Sağlık Ocağı, Semt Pazarı, Üniversite, Veteriner, Okul,
- * Konum : E5 e yakın, Şehir Manzaralı, Otobana Yakın, Toplu Ulaşımına Yakın, Boğaz köprülerine yakın , TEMe yakın, Şehir Merkezine Yakın,

Advert No:f-494589-888



Advert No:f-494589-888





A BLOCK-1A7
FLOOR:2,3,4,5,6,7,8

1+1 APARTMENT
GROSS: 89,3 m²

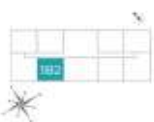
- ENTRANCE:
4,60 m²
- LIVING ROOM :
19,01 m²
- KITCHEN:
5,20 m²
- M. BEDROOM:
14,40 m²
- BATHROOM:
3,80 m²



B BLOCK - 1B2
FLOOR:1,2,3,4,5,6,7,8

1+1 APARTMENT
GROSS: 90,9 m²

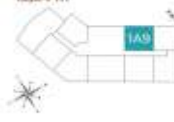
- ENTRANCE:
5,66 m²
- LIVING ROOM + KITCHEN:
24,49 m²
- BEDROOM:
13,50 m²
- BATHROOM:
4,11 m²



A BLOCK - 1A9
FLOOR:1,3,4,5,6,7,8

1+1 APARTMENT
GROSS: 86,17 m²

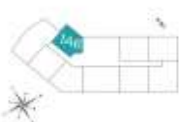
- ENTRANCE:
5,66 m²
- LIVING ROOM:
16,42 m²
- KITCHEN:
5,87 m²
- BATHROOM:
4,11 m²
- M.BEDROOM:
12,24 m²



A BLOCK - 1A6
FLOOR:1,3,4,5,6,7,8

1+1 APARTMENT
GROSS: 73,97 m²

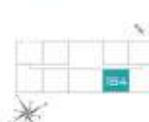
- LIVING ROOM + KITCHEN:
19,01 m²
- M. BEDROOM:
11,20 m²
- BATHROOM:
3,60 m²



B BLOCK - 1B4
FLOOR:1,2,3,4,5,6,7,8

1+1 APARTMENT
GROSS: 90,9 m²

- ENTRANCE:
5,66 m²
- LIVING ROOM + KITCHEN:
24,49 m²
- BEDROOM:
13,50 m²
- BATHROOM:
4,11 m²



Advert No:f-494589-888

B BLOCK - 1B1
FLOOR:12,13,14,15,16

1+1 APARTMENT
GROSS: 85,78 m²

ENTRANCE: 5,66 m²
LIVING ROOM + KITCHEN: 22,26 m²
BEDROOM: 12,24 m²
BATHROOM: 4,11 m²




A BLOCK - 1A8
FLOOR:12,13,14,15

1+1 APARTMENT
GROSS: 90,89 m²

ENTRANCE: 5,30 m²
LIVING ROOM + KITCHEN: 24,30 m²
H. BEDROOM: 14,40 m²
BATHROOM: 3,80 m²




A BLOCK - 1A5
FLOOR:1

1+1 APARTMENT
GROSS: 77,54 m²

ENTRANCE: 5,66 m²
LIVING ROOM + KITCHEN: 18,91 m²
BEDROOM: 9,15 m²
BATHROOM: 4,40 m²




B BLOCK - 1B3
FLOOR:12,13,14,15,16

1+1 APARTMENT
GROSS: 85,78 m²

ENTRANCE: 5,66 m²
LIVING ROOM + KITCHEN: 22,26 m²
BEDROOM: 12,24 m²
BATHROOM: 4,11 m²




A BLOCK - 1A10
FLOOR:12,13,14,15

1+1 APARTMENT
GROSS: 91,31 m²

ENTRANCE: 5,66 m²
LIVING ROOM + KITCHEN: 24,49 m²
H. BEDROOM: 13,50 m²
BATHROOM: 4,11 m²