

**RUBY BY BINGHATTI**

UNITED ARAB EMIRATES / DUBAI / JUMEIRAH VILLAGE CIR

**Completion Date:**  
12 / 2025**Price Range:**  
189,000 - 681,000 \$**Development Area:**  
4,687 m<sup>2</sup>**Opportunity | New | For Investment |****Investment Properties | Luxury Property |**

## A Gem Among Dubai's Skyline

### Overview

Ruby by Binghatti is a masterpiece of modern architecture located in Jumeirah Village Circle (JVC), one of Dubai's most vibrant and sought-after neighborhoods. This mixed-use development is meticulously designed to offer the perfect balance of luxury, functionality, and community living. With a striking crimson-and-gold façade, Ruby redefines urban elegance.

### Project Highlights

- Property Type: Mixed-use development with residential, retail, and commercial spaces.
- Structure: Basement + Ground Floor + 4 Podium Levels + 2 Office Levels + 18 Residential Floors + Roof.
- Unit Types:
  - Studios: 319 units.
  - 1-Bedroom Apartments: 185 units.
  - 2-Bedroom Apartments: 66 units.
  - 3-Bedroom Apartments: 2 units.
- Retail & Commercial: 10 ground-floor retail shops and 45 office spaces.

### Interiors & Finishes

Every residence in Ruby by Binghatti is crafted with precision, offering an unmatched blend of style and comfort.

- Materials: Luxurious finishes include polished marble floors, wood veneers, champagne metal accents, and elegant Roso Levanto marble details.

Windows: Floor-to-ceiling windows flood the interiors with natural light and frame panoramic cityscapes.

Design Philosophy: Interiors are characterized by clean lines, open layouts, and a curated palette of rich hues, creating a space that exudes sophistication and tranquility.

### Views

The thoughtfully designed residences at Ruby provide breathtaking vistas of the vibrant JVC community and Dubai's iconic skyline. Each apartment maximizes natural light and scenic views through expansive windows, offering residents a connection to the city's dynamic energy and serene surroundings.

### Amenities

Ruby by Binghatti elevates everyday living with a wide range of world-class amenities:

- Swimming Pools: Separate adult and kids' pools for relaxation and fun.
- Wellness Facilities: A yoga zone, jogging track, and state-of-the-art fitness center to maintain an active lifestyle.
- Outdoor Spaces: Landscaped seating areas and green zones for moments of peace and connection.

### Prime Location

Nestled in JVC, Ruby provides seamless access to Dubai's key attractions and major roadways, including Al Khail Road and Sheikh Mohammed bin Zayed Road. Residents are within minutes of iconic landmarks such as Burj Khalifa, Jumeirah Beach, and world-class dining and shopping destinations.

### Why Choose Ruby?

- Architectural Brilliance: A bold statement with a crimson-and-gold façade that embodies luxury.
  - Timeless Investment: A project by Binghatti, renowned for delivering exceptional properties.
  - Connected Lifestyle: A perfect blend of convenience, elegance, and a vibrant community.
- Ruby by Binghatti is more than a residence—it's a lifestyle. Welcome to a home where every facet shines brighter.

### **LOCATION :**

**By Street, Near to Street, Close to City Center,**

### **ENVIRONMENT :**

**Shopping Center, Bank, Gas Station, Mini Movie Theater, Drugstore, Drugstore / Medical, Entertainment Center, Hospital / Health facility, Firefighting, Nursery, Coiffure & Beauty Center, High School, School (Education facility), Patisserie & Bakery, Polyclinic, Police Station, Post Office, Restaurant, Health Center, Veterinary, Dry-Cleaning, Aquapark, Movie Theater,**

### **INFRASTRUCTURE :**

**Earthquake Regulation Proof, Earthquake Resistant, Ground Survey,**

### **COMPOUND :**

**Solar Power, Security, Pressure Tank, Intercom, Generator-Power Unit, Cable TV, Cable TV / satellite, Doorman, Central Air Conditioning, Parking - Indoor, Meeting Room, Satellite Broadcast, Ground Heating, Carry Lift/Elevator, Security System, Indoor Garage, Suitable for Disabled, Fire Alarm, Security Camera,**

### **CONSTRUCTION PROPERTIES :**

**Built-in White Goods Kitchen, Purification Plant, Granite Coating, Heat Proofing, Marble floors, High Entrance, High Ceiling, Glass Coated, Sound Isolation,**

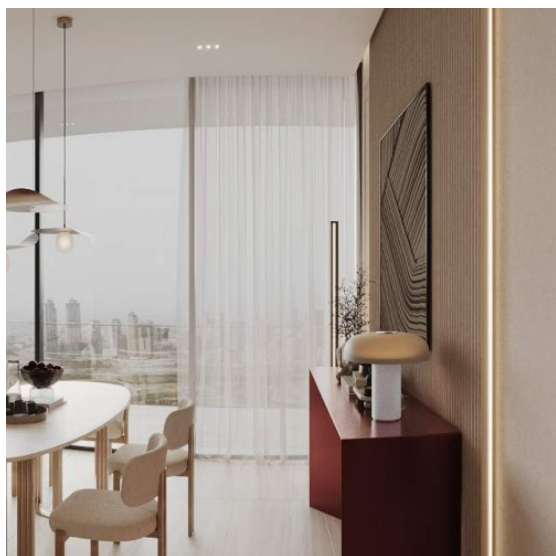
### **SCENERY :**

**City View,**

### **FACILITY ACTIVITIES :**

**Children Swimming Pool, Fitness Center, Social Facility, Gym, Jogging / Walking Areas, Swimming Pool, Swimming Pool (Indoor), Olympic Pool, Assistant Service, SPA,**

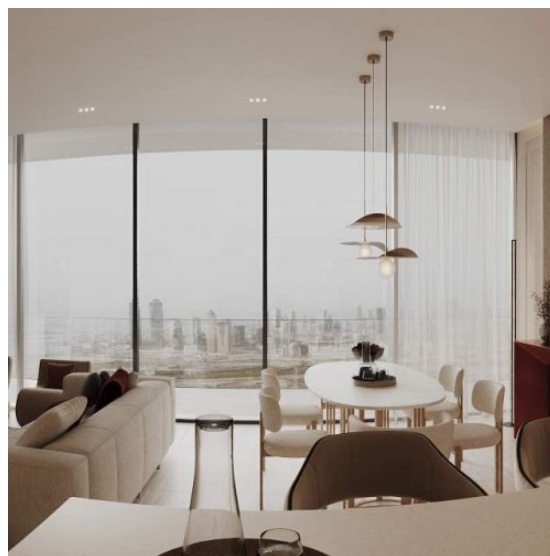
## ESTATE TYPES



**189,000 \$**

**34 m<sup>2</sup>**

**For Sale, Apartment (319)**



**271,000 \$**

**64 m<sup>2</sup>, 1 + 1**

**For Sale, Apartment (185)**



**456,000 \$**

**101 m<sup>2</sup>, 2 + 1**

**For Sale, Apartment (66)**



**681,000 \$**

**182 m<sup>2</sup>, 3 + 1**

**For Sale, Apartment (2)**



