

**CENTRO BEYLIKDÜZÜ**

TURKEY / ISTANBUL / BEYLIKDÜZÜ

**Project Status:**  
**Completed****Price Range:**  
**145,000 - 550,000 \$****Development Area:**  
**13,600 m<sup>2</sup>****Opportunity | New |****Investment Properties |**

## A Vibrant Hub for Modern Living and Investment

### Introduction

Welcome to Centro Beylikdüzü, an exceptional real estate development redefining modern urban living in the heart of Istanbul's European side. Combining luxurious residences, versatile offices, and dynamic commercial spaces, this project is poised to become a landmark in Beylikdüzü. With its prime location, state-of-the-art amenities, and diverse investment opportunities, Centro Beylikdüzü offers an unmatched lifestyle for residents and a lucrative prospect for investors.

### Project Overview

Situated on a sprawling 13,600 m<sup>2</sup> plot, Centro Beylikdüzü boasts a meticulously planned community with approximately 6,000 m<sup>2</sup> dedicated to open and closed social facilities. The project features:

- 168 Residences: Offering a wide range of layouts, from compact 1+1 apartments to expansive 5+2 duplexes.

- 68 Offices: Perfectly designed to cater to modern business needs.

- 55 Commercial Units: Prime retail spaces suitable for diverse businesses.

All units are ready to move in, making it an ideal choice for immediate settlement or investment. The development is also suitable for Turkish citizenship and residential permits, adding to its allure for international buyers.

### Prime Location

Centro Beylikdüzü enjoys an enviable location with unparalleled connectivity and proximity to essential landmarks:

- 5-minute walk to the Metrobus, ensuring seamless city access.

- 50 meters from Beylikdüzü Public Hospital.

- 200 meters from Beykent University Hospital.

- 25 meters from Perlavista Shopping Mall.

- 250 meters from Beykent University.

- 2.5 km from Marmara Park Mall.

- 1.25 km from Tüyap Fair Convention and Congress Center.

- 2.1 km from Büyüçekmece Beach.

This strategic location not only enhances everyday convenience but also boosts the project's appeal for residential and commercial investments.

### Luxurious Amenities

Residents of Centro Beylikdüzü are treated to an array of premium social facilities:

- Wellness and Leisure: Turkish Hammam, sauna, fitness center, and swimming pool.

- Family-Friendly Features: Children's playground and a private kindergarten (American Kültür Kindergarten).

- Parking: Multi-storey covered parking ensures convenience and security for all.

These thoughtfully designed amenities provide a holistic living experience, making Centro Beylikdüzü a perfect choice for families and professionals alike.

### Residences and Finishing

Centro Beylikdüzü offers a diverse range of meticulously crafted residential units:

- Layouts: 1+1, 2+1, 3+1, 3+2, 4+2, and 5+2 apartments.

- Sizes and Prices:

- 1+1 Flats: 62 m<sup>2</sup>, starting at \$145,000.

- 2+1 Flats: 90 m<sup>2</sup>, starting at \$190,000.

- 3+1 Flats: 200 m<sup>2</sup>, starting at \$350,000.

- 3+2 Duplex Flats: 300 m<sup>2</sup>, starting at \$337,000.

- 4+2 Duplex Flats: 300 m<sup>2</sup>, starting at \$410,000.

- 5+2 Duplex Flats: 350 m<sup>2</sup>, starting at \$550,000.

Each unit is equipped with Franke brand white appliances, including a dishwasher, oven, and hob. Depending on the unit size, 2-3 Mitsubishi air conditioners are provided, ensuring comfort and energy efficiency.

The project is built on a raft foundation with C30 concrete class and curtain concrete technology, adhering to the latest earthquake regulations, ensuring safety and durability.

### Commercial Units and Investment Opportunities

Centro Beylikdüzü's 55 commercial units are strategically located to attract high foot traffic, offering a variety of business opportunities. From retail stores to cafes and service outlets, these spaces are ideal for entrepreneurs and established brands.

With starting prices significantly lower than comparable properties in the area, and flexible payment options, including up to 12 months installment plans and additional discounts for cash payments, Centro Beylikdüzü presents an irresistible investment opportunity.

### Conclusion

Centro Beylikdüzü is more than just a residential complex; it's a vibrant community that seamlessly blends luxury, convenience, and investment potential. Whether you're seeking a dream home with stunning sea views or a high-yield property in Istanbul's thriving real estate market, Centro Beylikdüzü delivers on every front. Secure your place today and step into a future of limitless possibilities!

## **LOCATION :**

**Near to Street, By E5 Highway, Near to E5 Highway, Near to Highway, Close to bus terminal, Close to Minibus Route, Close to Metrobus Transportation,**

## **ENVIRONMENT :**

**Shopping Center, Bank, Gas Station, Drugstore, Drugstore / Medical, Entertainment Center, Hospital / Health facility, Firefighting, Nursery, Coiffure & Beauty Center, High School, School (Education facility), Patisserie & Bakery, Polyclinic, Police Station, Post Office, Restaurant, Health Center, District Bazaar, Veterinary, Dry-Cleaning, Movie Theater, Close to Eurasia Tunnel,**

## **INFRASTRUCTURE :**

**Earthquake Regulation Proof, Earthquake Resistant, Ground Survey,**

## **COMPOUND :**

**Solar Power, Security, Pressure Tank, Intercom, Generator-Power Unit, Cable TV, Cable TV / satellite, Central Air Conditioning, Parking - Outdoor, Parking - Indoor, Meeting Room, Satellite Broadcast, Ground Heating, Carry Lift/Elevator, Security System, Indoor Garage, Fire Alarm, Security Camera,**

## **CONSTRUCTION PROPERTIES :**

**Purification Plant, Glass Mosaic Coated, Granite Coating, Granite Basement, Heat Proofing, Marble floors, Fire ladder, High Entrance, High Ceiling, Reinforced Concrete, Sound Isolation,**

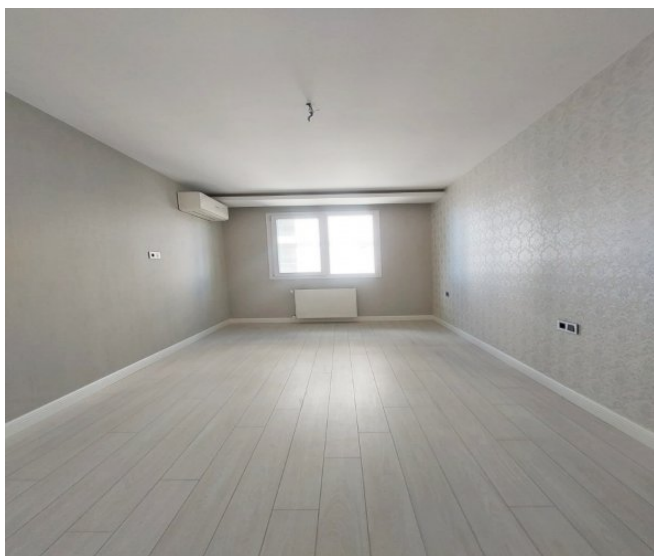
## **SCENERY :**

**Sea View, City View,**

## **FACILITY ACTIVITIES :**

**Children Swimming Pool, Fitness Center, Gym, Jogging / Walking Areas, Swimming Pool (Indoor), Sauna (General), Indoor Restaurant, Pool Bar, Turkish Hammam, Assistant Service, Valet Services, SPA,**

## ESTATE TYPES



**145,000 \$**

**62 m<sup>2</sup> , 1 + 1**

**For Sale, Apartment**



**190,000 \$**

**90 m<sup>2</sup> , 2 + 1**

**For Sale, Apartment**



**210,000 \$**

**98 m<sup>2</sup> , 2 + 1**

**For Sale, Apartment**



**350,000 \$**

**200 m<sup>2</sup> , 3 + 1**

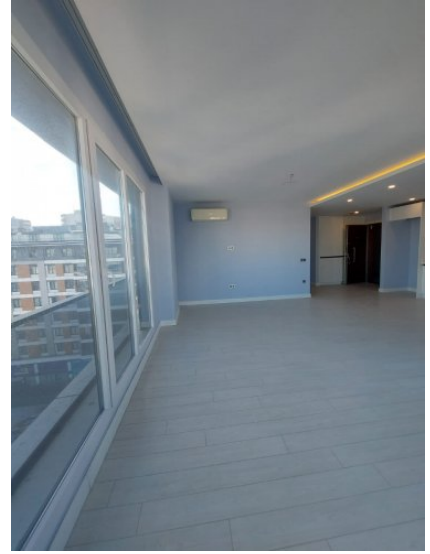
**For Sale, Apartment**





**337,000 \$**

**300 m<sup>2</sup> , 3 + 2**  
**For Sale, Apartment**



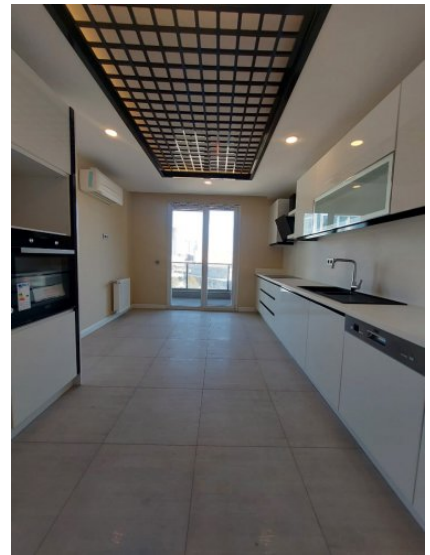
**337,000 \$**

**300 m<sup>2</sup> , 3 + 2**  
**For Sale, Apartment**



**410,000 \$**

**300 m<sup>2</sup> , 4 + 2**  
**For Sale, Apartment**



**550,000 \$**

**350 m<sup>2</sup> , 5 + 2**  
**For Sale, Apartment**

