

ESIL KARTEPE

TURKEY / KOCAELI / İZMIT

Project Status:
Completed**Price Range:**
318,000 - 605,000 \$**Development Area:**
11,000 m²**Opportunity | For Investment |****Holiday Properties | Nature & Mountain Properties | Luxury Property |**

Esil Kartepe - Where Nature and Luxury Meet

Discover *Esil Kartepe*, an extraordinary living experience designed to exceed expectations. Nestled between the Gulf of İzmit and Sapanca Lake, this exclusive development combines breathtaking natural beauty with innovative horizontal architecture. With a prime location only 45 minutes from Istanbul, Esil Kartepe offers a seamless blend of tranquility, modernity, and accessibility. It is more than a residential project; it is a lifestyle that redefines comfort, prestige, and harmony with nature.

Prime Location: At the Heart of Connectivity

Esil Kartepe boasts an exceptional location that places its residents at the epicenter of convenience and nature. Situated in Kartepe, the project offers easy access to major highways and transportation hubs while being surrounded by lush greenery. Its proximity to Istanbul and neighboring cities makes it a perfect choice for those seeking a balance between urban living and peaceful retreats.

- Located between İzmit Gulf and Sapanca Lake.
- 45 minutes from Istanbul.
- Close to elite shopping and healthcare centers in Kocaeli.
- Easy access to highways, including E-5 and TEM.
- Nearby attractions include Kartepe Ski Resort, Sapanca Lake, and Ormanya Wildlife Park.

Diverse Apartment Types and Sophisticated Design

Esil Kartepe offers a range of meticulously designed apartments tailored to meet the needs of various lifestyles. From cozy one-bedroom units to expansive four-bedroom terrace duplexes, the residences are crafted with luxury and functionality in mind. Each space is designed with premium materials and attention to detail, ensuring a living environment that is both elegant and comfortable.

- Apartment types: 1+1, 2+1, 3+1, 4+1, garden duplexes, and terrace duplexes.
- Luxurious interiors featuring premium brands.
- Spacious layouts with private pools, balconies, and terraces.
- Traditional Turkish hamams and modern saunas integrated into apartments.
- Total gross areas range from 75 m² to 434 m².

Amenities: A Life of Comfort and Wellness

Life at Esil Kartepe is enriched with a variety of amenities designed for relaxation, entertainment, and an active lifestyle. The project is equipped with facilities that cater to families, individuals, and social gatherings, ensuring every moment spent here is filled with joy and fulfillment.

- Private and communal pools, including year-round indoor options.
- Fitness centers, yoga and pilates studios, squash courts, and more.
- Entertainment options: billiards, game rooms, and a cinema-TV lounge.
- Children's playgrounds and dedicated hobby areas.
- Amphitheater, café lounges, and social spaces for community events.

Nature at Your Doorstep

Embrace the serenity of nature without compromising on luxury. Esil Kartepe is designed to offer its residents a unique connection to the surrounding environment, promoting a lifestyle of peace and rejuvenation. From scenic walking trails to nearby natural parks, every aspect of this project encourages harmony with nature.

- Observation terraces overlooking artificial ponds.
- Proximity to Sapanca Lake for bird watching and canoeing.
- Access to nearby forests, hiking trails, and picnic areas.
- Kartepe Ski Center for winter sports enthusiasts.
- Recreational options like horseback riding, golfing, and water skiing.

Esil Kartepe is more than just a residence; it is a haven where luxury meets tranquility. By combining modern architectural excellence with unparalleled natural surroundings, it provides a lifestyle that is both prestigious and serene. Whether you seek a vibrant community, a retreat into nature, or a luxurious home, Esil Kartepe delivers beyond expectations. Come, be a part of this unique living experience and redefine the way you live.

LOCATION :

Near to Street, Near to Highway, In Nature, Close to TEM,

INFRASTRUCTURE :

Earthquake Regulation Proof, Earthquake Resistant, Ground Survey,

COMPOUND :

Solar Power, Security, Pressure Tank, Intercom, Generator-Power Unit, Cable TV, Cable TV / satellite, Doorman, Central Air Conditioning, Parking - Outdoor, Parking - Indoor, Satellite Broadcast, Ground Heating, Carry Lift/Elevator, Security System, Indoor Garage, Suitable for Disabled, Fire Alarm, Security Camera,

CONSTRUCTION PROPERTIES :

Built-in White Goods Kitchen, Purification Plant, Granite Coating, Heat Proofing, High Entrance, Sound Isolation,

SCENERY :

Nature View, City View,

FACILITY ACTIVITIES :

Basketball Court, Children Swimming Pool, Fitness Center, Social Facility, Gym, Squash, Tennis, Volleyball, Jogging / Walking Areas, Swimming Pool, Swimming Pool (Indoor), Sauna (General), Olympic Pool, Turkish Hammam, Assistant Service, SPA,

Product Documents

[ESIL_KARTEPE_CATALOG.pdf](#) |

ESTATE TYPES



330,000 \$



330,000 \$

162 m²

For Sale, Apartment

170 m²

For Sale, Apartment



318,000 \$



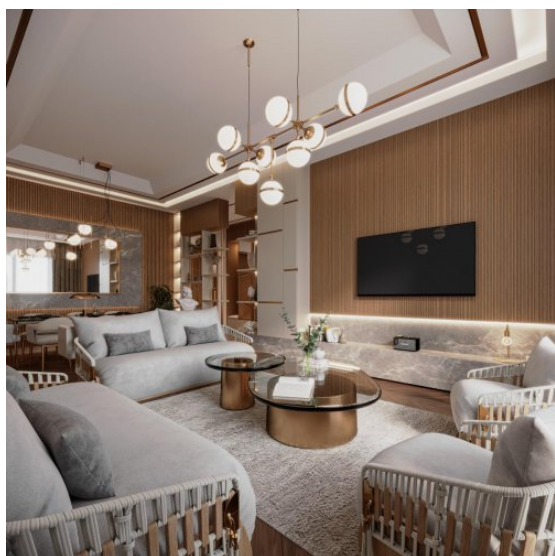
605,000 \$

257 m²

For Sale, Apartment

166 m²

For Sale, Apartment



500,000 \$

230 m²

For Sale, Apartment



586,000 \$

254 m²

For Sale, Apartment

