

EMPIRE BEYLIKDÜZÜ

TURKEY / ISTANBUL / BEYLIKDÜZÜ

Project Status:
Completed**Price Range:**
260,000 - 385,000 \$**Development Area:**
9,800 m²



The Perfect Blend of Comfort and Convenience

Welcome to Empire Beylikdüzü, a prestigious residential and commercial development strategically positioned to offer a harmonious balance of luxury, accessibility, and modern living. Nestled in one of Istanbul's most vibrant and central locations, this project is designed to meet the needs of professionals, families, and investors alike. With its innovative architecture, state-of-the-art facilities, and prime location, Empire Beylikdüzü offers a unique lifestyle opportunity in the heart of Istanbul.

Location

Empire Beylikdüzü is perfectly situated to connect its residents with Istanbul's key hubs.

- Transportation:

- Located directly on the E-5 highway
- Just 1 minute to Metrobus for seamless city access
- Kanal Istanbul: 5 minutes
- TEM Highway: 15 minutes
- Istanbul Airport: 15 minutes

- Health Facilities:

- Medicana Hospital: 5 minutes
- Medilife Hospital: 3 minutes

- Education:

- Gelişim University: 3 minutes
- Istanbul University: 5 minutes
- Beykent University: 7 minutes

- Shopping & Entertainment:

- Eskiđji Bazaar: 2 minutes
- Marmara Park Shopping Mall: 3 minutes
- Ramada Hotel: 2 minutes
- Avcılar & Büyükgçekmece Beach Park: 6 minutes

Aqua Florya: 10 minutes

This central location ensures that everything you need is just a few minutes away, from educational institutions to healthcare, shopping, and entertainment.

Project Specifications

Empire Beylikdüzü is an expansive development spanning 9,500 m², with 3,000 m² of landscaping and 2,500 m² of covered space. The project consists of four blocks, offering a wide range of residential and commercial options:

- Residential Spaces:

- 340 apartments in 1+1 and 2+1 layouts
- Large balconies in every unit for a comfortable and scenic living experience

- Commercial Spaces:

- 45 commercial offices
- Shops covering 1,651 m²
- Warehouses covering 2,146 m²

- Features and Amenities:

- Waterfalls and ornamental pools
- Semi-Olympic outdoor and indoor swimming pools
- Basketball court and children's playground
- Luxurious facilities including a Turkish bath, steam room, sauna, jacuzzi, and fitness center
- Smart home system for convenience and security
- 24/7 security with reception services

Social facilities and parking garage

Empire Beylikdüzü blends modern architecture with natural beauty to create a serene yet functional environment. The project is designed to elevate your lifestyle with its thoughtfully curated features.

Investment Highlights

Empire Beylikdüzü is not only a home but also a lucrative investment opportunity. Key highlights include:

- Delivery Timeline: Ready for delivery within 6 months
- Rental Guarantee: Ensures a steady income for investors
- Flexible Payment Options:

- 24-month installment plans with 50% cash down payment and 0% interest

High Demand Area: Positioned in a central hub with proximity to Kanal Istanbul, Istanbul Airport, and thriving business districts

This project offers a unique chance to secure property in a high-growth area with excellent long-term returns.

Empire Beylikdüzü stands out as a prime destination for luxury, convenience, and investment potential. Whether you are seeking a vibrant new home or a profitable addition to your portfolio, this development caters to every need. Its combination of modern amenities, strategic location, and high-quality construction makes it a standout project in Istanbul's real estate market.

Your dream lifestyle awaits at Empire Beylikdüzü – where innovation meets comfort.

Block Number : 1

LOCATION :

By Street, By E5 Highway, Near to E5 Highway, Close to Minibus Route, Close to Metrobus Transportation,

ENVIRONMENT :

Shopping Center, Bank, Gas Station, Drugstore, Drugstore / Medical, Entertainment Center, Hospital / Health facility, Firefighting, Nursery, Coiffure & Beauty Center, High School, School (Education facility), Patisserie & Bakery, Polyclinic, Police Station, Post Office, Restaurant, Health Center, Veterinary, Dry-Cleaning,

INFRASTRUCTURE :

Earthquake Regulation Proof, Earthquake Resistant,

COMPOUND :

Security, Intercom, Cable TV / satellite, Parking - Outdoor, Meeting Room, Ground Heating, Carry Lift/Elevator, Security System, Indoor Garage, Fire Alarm, Security Camera,

CONSTRUCTION PROPERTIES :

Built-in White Goods Kitchen, Purification Plant, Heat Proofing, Fire ladder, High Ceiling, Reinforced Concrete, Sound Isolation,

SCENERY :

City View,

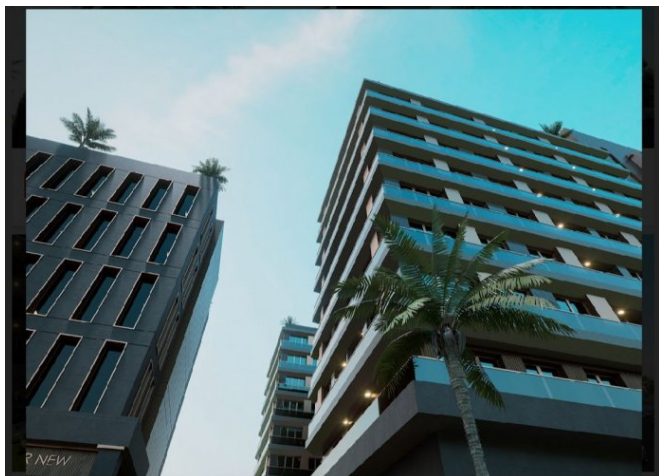
FACILITY ACTIVITIES :

Children Swimming Pool, Fitness Center, Social Facility, Gym, Jogging / Walking Areas, Swimming Pool, Swimming Pool (Indoor), Sauna (General), Wave Pool, Turkish Hammam, Assistant Service, SPA,

Product Documents

[50.pdf](#) | [49.pdf](#) | [48.pdf](#) | [47.pdf](#) | [46.pdf](#) | [44.pdf](#) | [43.pdf](#) | [42.pdf](#) | [41.pdf](#) | [58.pdf](#) |

ESTATE TYPES



260,000 \$

92 m², 1 + 1
For Sale, Apartment



385,000 \$

148 m², 2 + 1
For Sale, Apartment

