

**BEYAZ PARK TOPKAPI - 2+1 APARTMENT / RESIDANCE Istanbul / Fatih**

For Sale - Apartment 561,314 \$ | 125 m2 Istanbul / Fatih



# Rooms : 2  
# Saloons : 1  
# Baths : 2  
Type of Property : Apartment Flat  
Property Condition : Brand New  
Usage Status : Empty  
Heating : Central Heating  
Heating Type : Natural Gas  
Property Direction : South  
East  
West  
North



İsmail Can

Phone +90 542-811 80 80

Mobile Phone +90 542-811  
80 80

REALTY GALAXY

Phone +90 542-811 80 80

Mobile Phone +90 533-382  
39 79

Fax +90 212-855 74 75

Yavuz Sultan Selim Bulvarı

Büyükkçekmece /

Büyükkçekmece

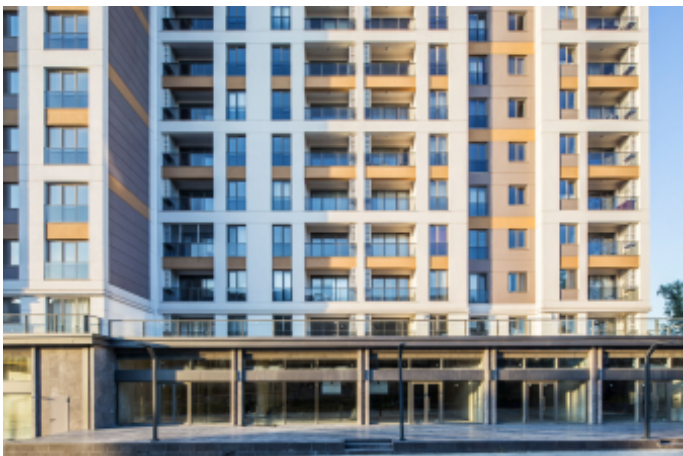
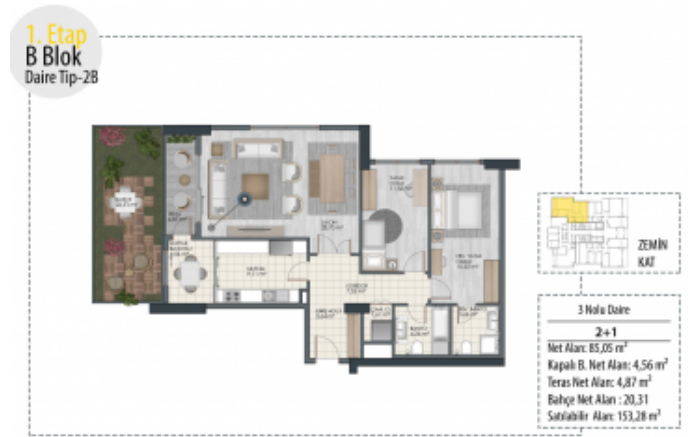
34528 , Istanbul

Advert No:f-494589-907

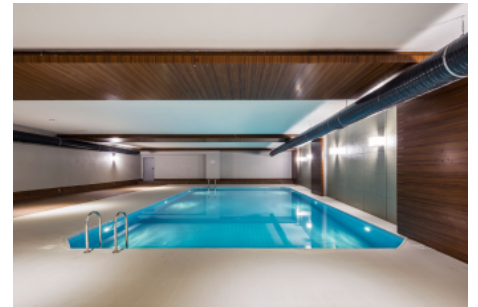
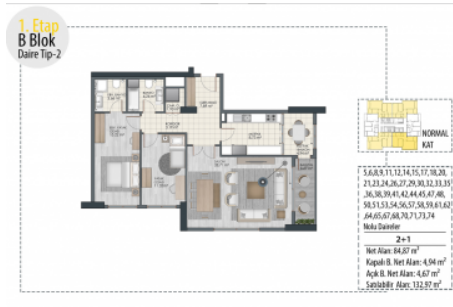
---

- \* Internal Properties : Built-in White Goods Kitchen, Painted, Steel Door, With master bathroom, Diaphone with screen, Kitchen Natural Gas, Ceramic Ground, Security System,
- \* Building : Elevator / Lift, Garden Wall, With Garden, Earthquake Regulation Proof, Earthquake Resistant, Pressure Tank, Intercom, Internet, Heat Proofing, Generator-Power Unit, Doorman, In Compound, Water tank, Fire ladder, Carry Lift/Elevator, Ground Survey, Reinforced Concrete, Parking, Fire Alarm,
- \* Environment : Shopping Center, Kindergarten, ATM, Bank, Gas Station, Cafe, Drugstore, Drugstore / Medical, Entertainment Center, Elementary School, Cafeteria, Nursery, Coiffure & Beauty Center, High School, Market, Game Park, Park, Police Station, Post Office, Restaurant, Health Center, District Bazaar, University, Veterinary, School,
- \* External Properties : Sheathing,
- \* Compound : Children Swimming Pool, Fitness Center, Security, Parking - Outdoor, Parking - Indoor, Social Facility, Gym, Swimming Pool, Sauna (General), Security Camera,
- \* Location : Near to Street, Near to E5 Highway, City View, Close to Subway, Close to bus terminal, Close to Public Transportation, Close to Minibus Route, Close to Marine Transportation, Close to Metrobus Transportation, Close to Eurasia Tunnel, Close to Marmaray, Close to the tram, Close to City Center,

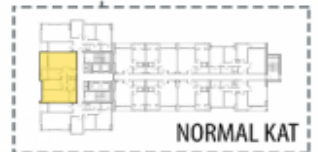
Advert No:f-494589-907



Advert No:f-494589-907



**2. Etap**  
**A Blok**  
Daire Tip-2



13,24,35,46,57,68,79,90, 101  
Nolu Daireler

**2+1**

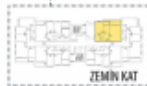
Net Alan: 78,40 m<sup>2</sup>

Kapalı B. Net Alan: 4,12 m<sup>2</sup>

Açık B. Net Alan: 6,52 m<sup>2</sup>

Satılabilir Alan: 130,38 m<sup>2</sup>

**2. Etap**  
**C Blok**  
Daire Tip-4



1 Nolu Daire

**2+1**

Net Alan: 58,68 m<sup>2</sup>

Açık B. Net Alan: 5,32 m<sup>2</sup>

Teras Net Alan: 7,21 m<sup>2</sup>

Satılabilir Alan: 97,83 m<sup>2</sup>

**1. Etap**  
**B Blok**  
Daire Tip-28



3 Nolu Daire

**2+1**

Net Alan: 65,06 m<sup>2</sup>

Kapalı B. Net Alan: 4,56 m<sup>2</sup>

Teras Net Alan: 4,87 m<sup>2</sup>

Bahçe Net Alan : 20,31

Satılabilir Alan: 153,28 m<sup>2</sup>

**2. Etap**  
**B Blok**  
Daire Tip-2



6,7,10,11,14,15,18,19,22,23,26,  
27,30,31,34,35,38,39,  
42,43,46,47 Nolu Daireler

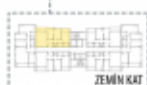
**2+1**

Net Alan: 74,76 m<sup>2</sup>

Açık B. Net Alan: 5,23 m<sup>2</sup>

Satılabilir Alan: 117,16 m<sup>2</sup>

**2. Etap**  
**C Blok**  
Daire Tip-1A



6 Nolu Daire

**2+1**

Net Alan: 80,07 m<sup>2</sup>

Açık B. Net Alan: 5,27 m<sup>2</sup>

Teras Net Alan: 7,22 m<sup>2</sup>

Satılabilir Alan: 128,06 m<sup>2</sup>

Advert No:f-494589-907

**1. Etap**  
**B Blok**  
Daire Tip-2

**NORMAL KAT**

5,6,8,9,11,12,14,15,17,18,20,  
21,22,24,26,27,29,30,32,33,35,  
36,38,39,41,42,44,45,47,49,  
50,51,53,54,56,57,58,59,61,62,  
64,65,67,68,70,71,73,74

Maks Daireler

2+1

Net Alan: 84,87 m<sup>2</sup>  
Kapalı B. Net Alan: 4,94 m<sup>2</sup>  
Açık B. Net Alan: 4,67 m<sup>2</sup>  
Sesizlik Alan: 112,97 m<sup>2</sup>

**2. Etap**  
**C Blok**  
Daire Tip-1

**NORMAL KAT**

7,8,9,10,12,13,15,16,18,19,21,22,  
24,25,27,28,30,31,33,34,36,37,  
39,40,42,43,45,46,48,49,51,52,  
54,55,57,58,59,60,61,63,64,66,  
67,69,70,72

Maks Daireler

2+1

Net Alan: 76,58 m<sup>2</sup>  
Kapalı B. Net Alan: 3,26  
Açık B. Net Alan: 5,27 m<sup>2</sup>  
Sesizlik Alan: 120,40 m<sup>2</sup>

**2. Etap**  
**A Blok**  
Daire Tip-4A/4B

**NORMAL KAT**

7,10,12,13,15,16,18,19,21,22,  
24,25,27,28,30,31,33,34,36,37,  
39,40,42,43,45,46,48,49,51,52,  
54,55,57,58,59,60,61,63,64,66,  
67,69,70,72

Maks Daireler

2+1

Net Alan: 81,97 m<sup>2</sup>  
Açık B. Net Alan: 4,26 m<sup>2</sup>  
Sesizlik Alan: 126,13 m<sup>2</sup>

**2. Etap**  
**C Blok**  
Daire Tip-3A

**ZEMİN KAT**

3 ve 4 Maks Daireler

2+1

Net Alan: 79,68 m<sup>2</sup>  
Açık B. Net Alan: 5,27 m<sup>2</sup>  
Teras Net Alan: 15,51 m<sup>2</sup>  
Sesizlik Alan: 135,80 m<sup>2</sup>

**1. Etap**  
**B Blok**  
Daire Tip-1

**NORMAL KAT**

7,10,13,16,19,22,23,31,34,37,  
40,41,44,45,53,55,58,60,63,66,  
69,72,75

Maks Daireler

2+1

Net Alan: 72,92 m<sup>2</sup>  
Kapalı B. Net Alan: 3,67 m<sup>2</sup>  
Açık B. Net Alan: 5,05 m<sup>2</sup>  
Sesizlik Alan: 114,82 m<sup>2</sup>

**2. Etap**  
**B Blok**  
Daire Tip-2

**ZEMİN KAT**

2,3 Maks Daireler

2+1

Net Alan: 74,76 m<sup>2</sup>  
Açık B. Net Alan: 5,34 m<sup>2</sup>  
Teras Net Alan: 6,80 m<sup>2</sup>  
Sesizlik Alan: 123,80 m<sup>2</sup>