

## BAŞAKŞEHİR AVRASYA - 2+1 APARTMENT / RESIDENCE Istanbul / Başakşehir

For Sale - Apartment 8,320,000 TL | 117 m2 Istanbul / Başakşehir



# Rooms : 2  
# Saloons : 1  
# Baths : 1  
Type of Property : Apartment Flat  
Property Condition : Brand New  
Usage Status : Empty  
Heating Type : Natural Gas  
Property Direction : West  
North  
South  
East  
Toilet Number : 1  
Available to Bank Credit : Yes  
Barter : No  
Hand Over : No



İsmail Can

Phone +90 542-811 80 80

Mobile Phone +90 542-811  
80 80



REALTY GALAXY

Phone +90 542-811 80 80

Mobile Phone +90 533-382  
39 79

Fax +90 212-855 74 75

Yavuz Sultan Selim Bulvarı

Büyükkçekmece /

Büyükkçekmece

34528 , Istanbul

Advert No:f-494589-901

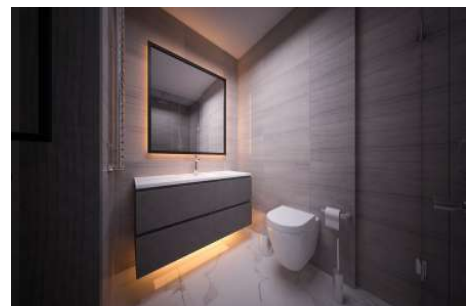
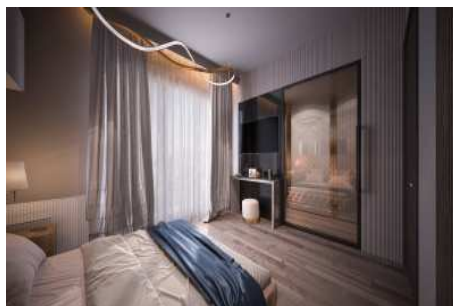
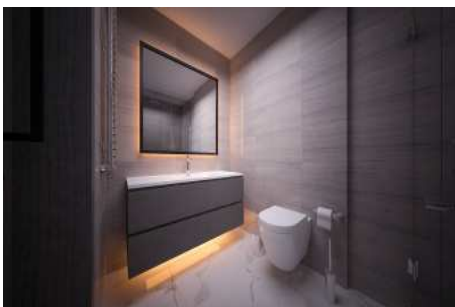
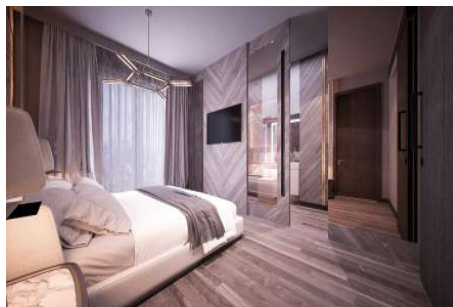
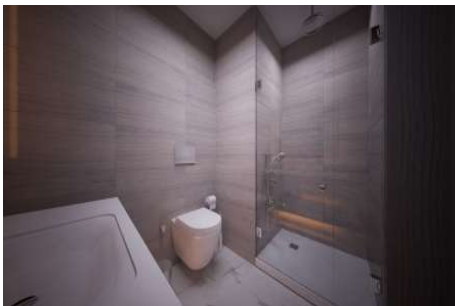
---

- \* Building : Elevator / Lift, Generator-Power Unit, Doorman, Water tank, Fire ladder, Ground Survey, Parking, Fire Alarm,
- \* Environment : Shopping Center, Kindergarten, ATM, Bank, Municipality, Gas Station, Cafe, Drugstore, Drugstore / Medical, Entertainment Center, Elementary School, Firefighting, Cafeteria, Nursery, Coiffure & Beauty Center, High School, Market, Game Park, Park, Police Station, Post Office, Restaurant, Health Center, District Bazaar, University, Veterinary, School,
- \* Compound : Fitness Center, Security, Parking - Indoor, Social Facility, Security Camera,
- \* Location : Near the Sea, Close to Airport, City View, Near to Highway, Close to Minibus Route, Close to TEM,

Advert No:f-494589-901



Advert No:f-494589-901

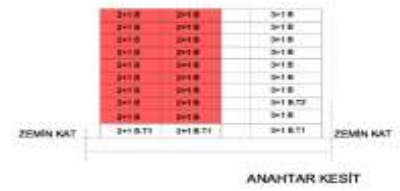


Advert No:f-494589-901

**2+1 B**

GİRİŞ HOLLÜ	7.47 m <sup>2</sup>
SALON	22.60 m <sup>2</sup>
MUTFAK	10.64 m <sup>2</sup>
YATAK ODASI	9.94 m <sup>2</sup>
E.YATAK ODASI	16.77 m <sup>2</sup>
E.BANYO	4.32 m <sup>2</sup>
BANYO	4.16 m <sup>2</sup>
HOL	4.56 m <sup>2</sup>
ÇAMAŞIR ODASI	0.88 m <sup>2</sup>
BALKON	4.93 m <sup>2</sup>

NET ALAN	81.53 m <sup>2</sup>
NET ALAN(balkon dahil)	86.46 m <sup>2</sup>
BRÜT ALAN	97.00 m <sup>2</sup>
SATILABİLİR ALAN	117.91 m <sup>2</sup>
DEPO	3.00 m <sup>2</sup>



**2+1 E.T1**

SİRE HOLLÜ	4.07 m <sup>2</sup>
SALON	22.97 m <sup>2</sup>
MUTFAK	10.00 m <sup>2</sup>
YATAK ODASI	9.74 m <sup>2</sup>
E.YATAK ODASI	13.81 m <sup>2</sup>
BANYO	4.16 m <sup>2</sup>
HOL	3.00 m <sup>2</sup>
ÇAMAŞIR ODASI	0.77 m <sup>2</sup>

NET ALAN	58.41 m <sup>2</sup>
NET ALAN(balkon dahil)	62.70 m <sup>2</sup>
BRÜT ALAN	69.00 m <sup>2</sup>
SATILABİLİR ALAN	78.77 m <sup>2</sup>
DEPO	3.00 m <sup>2</sup>



**1+1 B.T**

SİRE HOLLÜ	4.00 m <sup>2</sup>
SALON	22.80 m <sup>2</sup>
MUTFAK	10.00 m <sup>2</sup>
BANYO	4.00 m <sup>2</sup>
HOL	17.00 m <sup>2</sup>

NET ALAN	41.00 m <sup>2</sup>
NET ALAN(balkon dahil)	45.00 m <sup>2</sup>
BRÜT ALAN	52.00 m <sup>2</sup>
SATILABİLİR ALAN	57.00 m <sup>2</sup>
DEPO	3.00 m <sup>2</sup>



**2+1 D**

SİRE HOLLÜ	4.00 m <sup>2</sup>
SALON	16.70 m <sup>2</sup>
MUTFAK	9.77 m <sup>2</sup>
YATAK ODASI	9.00 m <sup>2</sup>
E.YATAK ODASI	14.00 m <sup>2</sup>
BANYO	4.00 m <sup>2</sup>
HOL	3.00 m <sup>2</sup>
BALKON	3.00 m <sup>2</sup>

NET ALAN	58.41 m <sup>2</sup>
NET ALAN(balkon dahil)	61.41 m <sup>2</sup>
BRÜT ALAN	69.00 m <sup>2</sup>
SATILABİLİR ALAN	78.77 m <sup>2</sup>
DEPO	3.00 m <sup>2</sup>



**1+1 A**

SİRE HOLLÜ	4.00 m <sup>2</sup>
SALON	16.00 m <sup>2</sup>
MUTFAK	10.00 m <sup>2</sup>
BANYO	4.00 m <sup>2</sup>
BALKON	3.00 m <sup>2</sup>

NET ALAN	40.00 m <sup>2</sup>
NET ALAN(balkon dahil)	43.00 m <sup>2</sup>
BRÜT ALAN	50.00 m <sup>2</sup>
SATILABİLİR ALAN	55.00 m <sup>2</sup>
DEPO	3.00 m <sup>2</sup>



