

**ATAŞEHİR MODERN - 1+1 APARTMENT / RESIDENCE Istanbul / Ataşehir**

For Sale - Apartment 12,551,033 TL | 87 m2 Istanbul / Ataşehir



# Rooms : 1  
# Saloons : 1  
# Baths : 1  
Type of Property : Apartment Flat  
Property Condition : Brand New  
Usage Status : Empty  
Heating Type : Natural Gas  
Property Direction : South  
East  
West  
North



İsmail Can

Phone +90 542-811 80 80

Mobile Phone +90 542-811  
80 80

REALTY GALAXY

Phone +90 542-811 80 80

Mobile Phone +90 533-382  
39 79

Fax +90 212-855 74 75

Yavuz Sultan Selim Bulvarı

Büyükcemece /

Büyükcemece

34528 , Istanbul

Advert No:f-494589-900

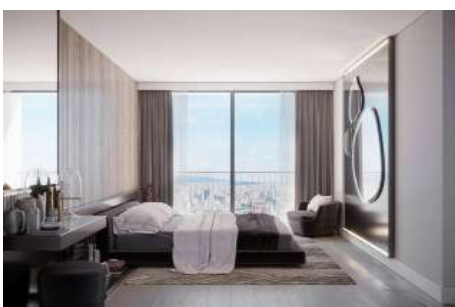
---

- \* Internal Properties : Built-in White Goods Kitchen, Balcony, Steel Door, Diaphone with screen, Ready made kitchen, Double Glass, Security System,
- \* Building : Elevator / Lift, Garden Wall, With Garden, Earthquake Regulation Proof, Earthquake Resistant, Intercom, Internet, Generator-Power Unit, Doorman, In Compound, Water tank, Fire ladder, Carry Lift/Elevator, Ground Survey, Reinforced Concrete, Parking, Fire Alarm,
- \* Environment : Shopping Center, Kindergarten, ATM, Bank, Municipality, Gas Station, Cafe, Drugstore, Drugstore / Medical, Entertainment Center, Elementary School, Cafeteria, Nursery, Coiffure & Beauty Center, High School, Market, Game Park, Park, Police Station, Post Office, Restaurant, Health Center, District Bazaar, University, Veterinary, School,
- \* Compound : Fitness Center, Security, Parking - Indoor, Social Facility, Gym, Jogging / Walking Areas, Swimming Pool (Indoor), Sauna (General), Security Camera,
- \* Location : Near to Street, Near to E5 Highway, Close to Airport, City View, Near to Highway, City Center, Close to Public Transportation, Close to Minibus Route, Close to Eurasia Tunnel, Close to TEM,

Advert No:f-494589-900



Advert No:f-494589-900



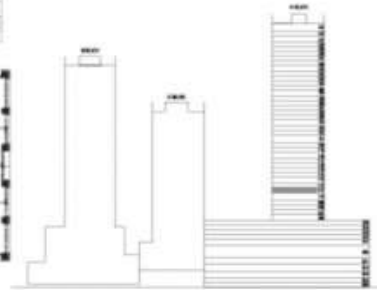
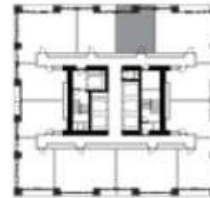
Advert No:f-494589-900



1+1 TİP 3 A BLOK

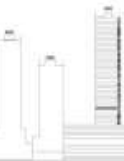
A-277	
MAHAL	NET ALAN
1 YATAK ODASI	13.61 m <sup>2</sup>
2 BANYO	3.75 m <sup>2</sup>
3 SALON + MUTFAK	23.80 m <sup>2</sup>
4 ANTRE	3.85 m <sup>2</sup>
5 BALKON	2.04 m <sup>2</sup>
6 FR. BALKON	0.51 m <sup>2</sup>
DEPO	3.15 m <sup>2</sup>
NET ALAN : 47.55 m <sup>2</sup>	
BRÜT ALAN : 54.24 m <sup>2</sup>	
TOPLAM BRÜT ALAN : 61.59 m <sup>2</sup>	

Daire : A-277  
 Blok : A Blok  
 Daire Tipi : 1+1 TİP 3  
 Kat No : 11



1+1 TİP 5 A BLOK

A-270		Daire : A-270	
MAHAL	NET ALAN	Blok : A Blok	Daire Tipi : 1+1 TİP 5
1 BANYO	3.75 m <sup>2</sup>	DAIRE NO :	A-270
2 ANTRE	1.26 m <sup>2</sup>	BLOK NO :	A
3 SALON + MUTFAK	12.22 m <sup>2</sup>	Daire Tipi :	1+1 TİP 5
4 YODAN	12.22 m <sup>2</sup>	MAHAL NO :	11
5 BALKON	2.14 m <sup>2</sup>		
6 FR. BALKON	1.26 m <sup>2</sup>		
7 FR. BALKON	3.41 m <sup>2</sup>		
DEPO	3.88 m <sup>2</sup>		
NET ALAN : 32.74 m <sup>2</sup>			
BRÜT ALAN : 35.87 m <sup>2</sup>			
TOPLAM BRÜT ALAN : 35.77 m <sup>2</sup>			



1+1 TİP 2 A BLOK

A-264		Daire : A-264	
MAHAL	NET ALAN	Blok : A Blok	Daire Tipi : 1+1 TİP 2
1 YATAK ODASI	12.22 m <sup>2</sup>	DAIRE NO :	A-264
2 BANYO	1.83 m <sup>2</sup>	BLOK NO :	A
3 SALON + MUTFAK	12.22 m <sup>2</sup>	Daire Tipi :	1+1 TİP 2
4 ANTRE	1.26 m <sup>2</sup>	MAHAL NO :	11
5 BALKON	2.82 m <sup>2</sup>		
DEPO	3.28 m <sup>2</sup>		
NET ALAN : 45.55 m <sup>2</sup>			
BRÜT ALAN : 52.27 m <sup>2</sup>			
TOPLAM BRÜT ALAN : 52.27 m <sup>2</sup>			



1+1 TİP 4 A BLOK

A-262		Daire : A-262	
MAHAL	NET ALAN	Blok : A Blok	Daire Tipi : 1+1 TİP 4
1 MUTFAK ODASI	12.22 m <sup>2</sup>	DAIRE NO :	A-262
2 BANYO	1.83 m <sup>2</sup>	BLOK NO :	A
3 SALON + MUTFAK	12.22 m <sup>2</sup>	Daire Tipi :	1+1 TİP 4
4 ANTRE	1.26 m <sup>2</sup>	MAHAL NO :	11
5 BALKON	2.82 m <sup>2</sup>		
DEPO	3.28 m <sup>2</sup>		
NET ALAN : 42.55 m <sup>2</sup>			
BRÜT ALAN : 52.27 m <sup>2</sup>			
TOPLAM BRÜT ALAN : 52.27 m <sup>2</sup>			



1+1 TİP 1 A BLOK

A-260		Daire : A-260	
MAHAL	NET ALAN	Blok : A Blok	Daire Tipi : 1+1 TİP 1
1 YODAN	12.22 m <sup>2</sup>	DAIRE NO :	A-260
2 BANYO	1.83 m <sup>2</sup>	BLOK NO :	A
3 SALON + MUTFAK	12.22 m <sup>2</sup>	Daire Tipi :	1+1 TİP 1
4 ANTRE	1.26 m <sup>2</sup>	MAHAL NO :	11
5 BALKON	1.26 m <sup>2</sup>		
6 FR. BALKON	3.41 m <sup>2</sup>		
DEPO	3.88 m <sup>2</sup>		
NET ALAN : 32.74 m <sup>2</sup>			
BRÜT ALAN : 35.87 m <sup>2</sup>			
TOPLAM BRÜT ALAN : 35.77 m <sup>2</sup>			

